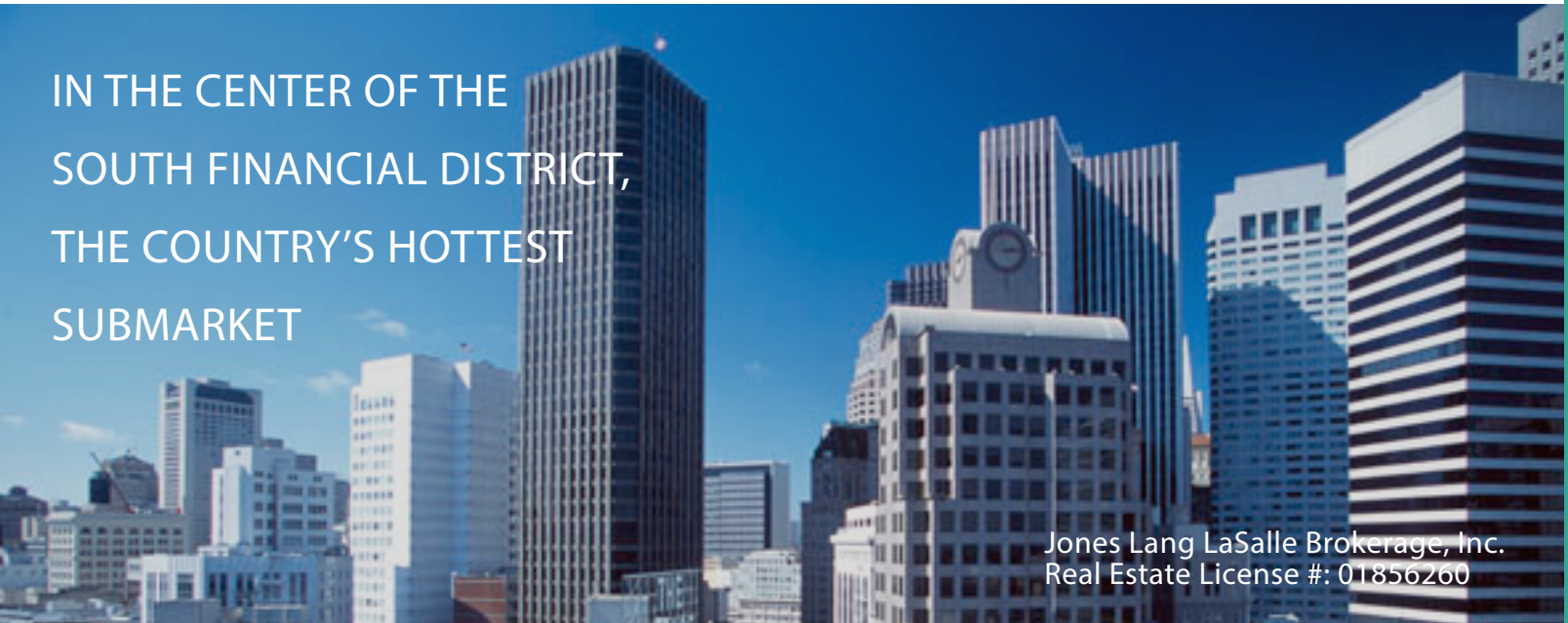




NEW MONTGOMERY



IN THE CENTER OF THE
SOUTH FINANCIAL DISTRICT,
THE COUNTRY'S HOTTEST
SUBMARKET



Jones Lang LaSalle Brokerage, Inc.
Real Estate License #: 01856260



NEW MONTGOMERY



SOUTH FINANCIAL DISTRICT

FEATURES

- Class A South Financial District office building
- 1 block from Montgomery Street BART station
- Close proximity to Yerba Buena Gardens, Metreon, Westfield and new office developments near Second and Mission
- On-site management
- Smaller floor plates ideal for small user identity

SPACE AVAILABLE

Suite	S.F.	Rental Rate	Date Avail.	Term
412	1,951	Call	Now	Neg
500	9,137	Call	Now	Neg

CONTACT

Steven A. Anderson
 Managing Director
 +1 415 395 7265
 steve.anderson@am.jll.com
 RE License #: 00869389

Tom Doupe
 Vice President
 +1 415 395 4933
 tom.doupe@am.jll.com
 RE License #: 01921218

EASY ACCESS TO PUBLIC
 TRANSPORTATION/HIGHWAYS AND
 IN WALKING DISTANCE TO THE BEST
 OF SAN FRANCISCO

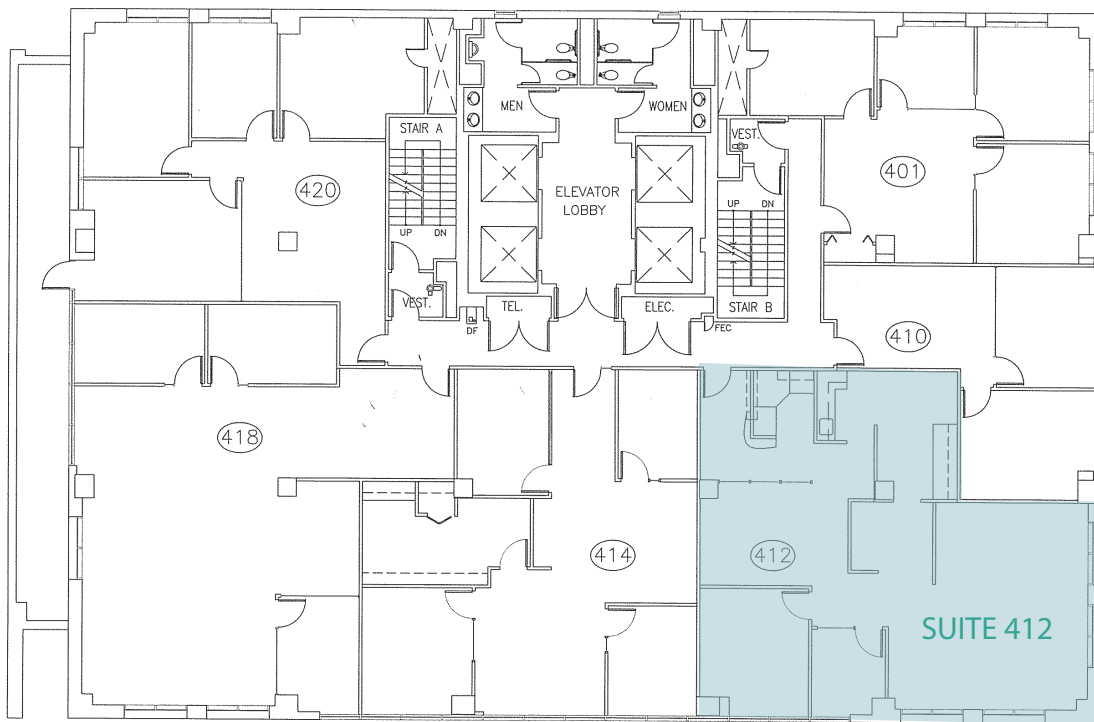




NEW MONTGOMERY

SUITE 412 1,951 SQUARE FEET

- Available Now
- Efficient Corner Suite
- 2 Private Offices
- Kitchen
- Reception area



New Montgomery Street

Mission Street

CONTACT

Steven A. Anderson
Managing Director
+1 415 395 7265
steve.anderson@am.jll.com
RE License #: 00869389

Tom Doupe
Vice President
+1 415 395 4933
tom.doupe@am.jll.com
RE License #: 01921218

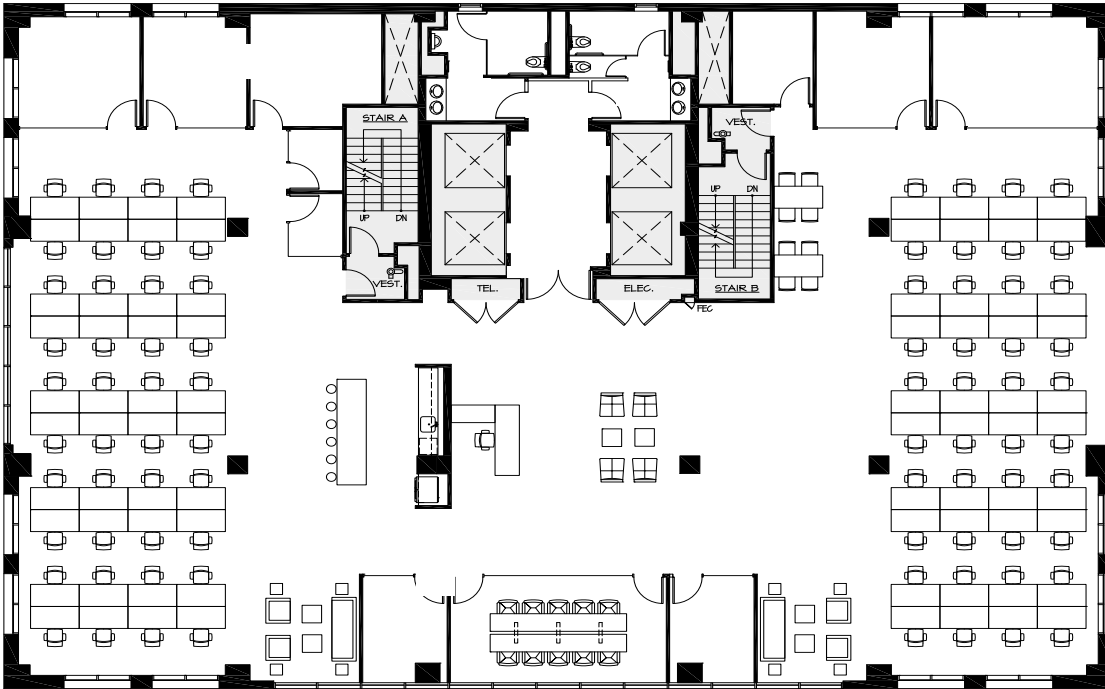




NEW MONTGOMERY

SUITE 500 9,137 SQUARE FEET

- Creative-spec suite underway
- Full floor opportunity
- Efficient side-core designed floor plate
- Creative elements including exposed ceiling and polished concrete throughout the reception area
- Floor-to-ceiling glass with abundant natural light
- 2 large conference rooms
- 6 medium conference rooms
- 3 phone rooms



New Montgomery Street

Mission Street

CONTACT

Steven A. Anderson
Managing Director
+1 415 395 7265
steve.anderson@am.jll.com
RE License #: 00869389

Tom Doupe
Vice President
+1 415 395 4933
tom.doupe@am.jll.com
RE License #: 01921218





NEW MONTGOMERY

